

Transport and Environment Committee

10.00 am, Thursday 17 May 2018

Decriminalised Traffic and Parking Enforcement in Edinburgh

Item number	7.6
Report number	
Executive/routine	Executive
Wards	All
Council Commitments	

Executive Summary

At the meeting of Transport and Environment Committee in [August 2017](#), following an intervention from Councillor David Key, it was agreed to receive a separate report on parking enforcement:

“3) *To agree that a report would be brought back to Committee to address the issues raised regarding the enforcement of parking protocols.*”

The report outlines the problems caused by incorrect parking on yellow and red line restrictions. It also outlines the Council’s responsibilities in relation to Decriminalised Parking Enforcement (DPE) and the measures that can be taken to tackle parking that contravenes the restrictions.

Decriminalised Traffic and Parking Enforcement in Edinburgh

1. Recommendations

- 1.1 It is recommended that the Committee:
 - 1.1.1 notes the content of this report;
 - 1.1.2 notes that specific measures to improve parking in Edinburgh are included in the Parking Action Plan (PAP), also at Committee today; and
 - 1.1.3 discharges Councillor Key's motion.

2. Background

- 2.1 At a meeting of the Transport and Environment Committee in [August 2017](#), following an intervention from Councillor Key, it was agreed that a report would be brought back to Committee to address the issues raised regarding the enforcement of parking protocols.
- 2.2 A similar report was previously submitted in [March 2015](#) in response to a motion relating to 'Illegal Parking' submitted by Councillor Nigel Bagshaw. The motion submitted by Councillor Bagshaw:
 - 2.2.1 "Recognises that incorrect parking (on double and single red and yellow lines) poses a significant problem in that it:
 - Obstructs those with limited mobility, people with buggies and the disabled;
 - Increases risks to the safety of pedestrians, and in particular children, by forcing them into the road; impedes and endangers cyclists;
 - Impedes the flow of public transport;
 - Causes expensive damage to footways."
 - 2.2.2 "Further recognises that despite the action currently taken the problem persists."
 - 2.2.3 "Acknowledges that the City of Edinburgh Council has the powers to enforce the regulations concerning this kind of incorrect parking".
- 2.3 We consider that similar issues are being raised by Councillor Key, particularly in relation to cycling.

- 2.4 The enforcement of parking restrictions within Edinburgh is an important component of the Council's Transport policy. DPE allows for the limited kerb side space within the city to be managed in such a way as to ensure public safety, improve accessibility for all road users and secure the economic vitality of the city.
- 2.5 DPE has operated in Edinburgh since 1998. Since that time, the Council has been responsible for the enforcement of the majority of parking restrictions, including all yellow lines.
- 2.6 DPE has always been carried out by an enforcement contractor using Parking Attendants (PAs). The current contract for Decriminalised Traffic and Parking Enforcement in Edinburgh was awarded to NSL Limited (NSL). The contract commenced on 1 October 2014 and has an initial lifespan of five years with the potential for a five-year extension.
- 2.7 In 2007, the Council took responsibility, from the Police, for enforcement of Greenway restrictions and delivered the service through the enforcement contract.
- 2.8 In 2012, enforcement of Bus Lane restrictions was decriminalised in Edinburgh, allowing the Council to begin enforcement of the restrictions using cameras.
- 2.9 The Police maintain responsibility for the enforcement of other contraventions relating to moving traffic, obstruction and parking on areas where there are white zig-zag markings. Examples of the contraventions where the Police retain responsibility for enforcement are; obstruction to access/egress to/from a private driveway (where no restrictions are in place) and parking/driving on a footway (where no restrictions are in place).
- 2.10 This report details the management of DPE in Edinburgh and explains the enforcement action that is taken to ensure that drivers comply with the parking regulations.

3. Main report

Types of Parking Restrictions within Edinburgh enforced through DPE

Yellow Lines

- 3.1 Parking restrictions are in place throughout the city. A map of the controlled zones and the prevailing hours of restriction can be found in Appendices 1 and 2.
- 3.2 In general terms, single yellow lines are enforceable 8.30am until 6.30pm Monday to Saturday, or 8.30am until 5.30pm Monday to Friday, depending on what part of the city they are in place.
- 3.3 Within the Controlled Parking Zones (CPZs) there is no need for a time plate at single yellow line restrictions, where there is no loading prohibition, as the times of restriction are reflected on the CPZ zone entry signs. If the times of restriction differ from the CPZ they will be reflected by associated time plates.
- 3.4 Where there are no kerb markings or time plates indicating a loading prohibition:

- 3.4.1 Loading and unloading of a vehicle is permitted for periods of up to 30 minutes, on all yellow line restrictions, single or double, provided it is necessary for the vehicle to be waiting at the location. Vehicles can be granted longer periods to carry out loading and unloading activities by applying for a dispensation.
- 3.4.2 PAs will observe a private vehicle on all yellow lines, single or double, for a full five minutes, or a marked goods vehicle for a full ten minutes, to check for loading activity before issuing a Penalty Charge Notice (PCN).
- 3.4.3 Vehicles displaying a valid disabled persons' Blue Badge are exempt from the waiting restrictions and may park on all yellow lines, single and double, without time limit.
- 3.4.4 Vehicles displaying an Essential Users' Permit, used by health care workers, can park on all yellow lines, single or double, for up to two hours when they are carrying out domiciliary visits.
- 3.5 There are various exemptions to the waiting restrictions including vehicles being used by the emergency services, vehicles associated with road excavation and public utility works, security vehicles and postal service vehicles.
- 3.6 Figure 1 details the length of yellow lines restrictions, where there are no kerb markings or time plates indicating a loading prohibition, in the city.

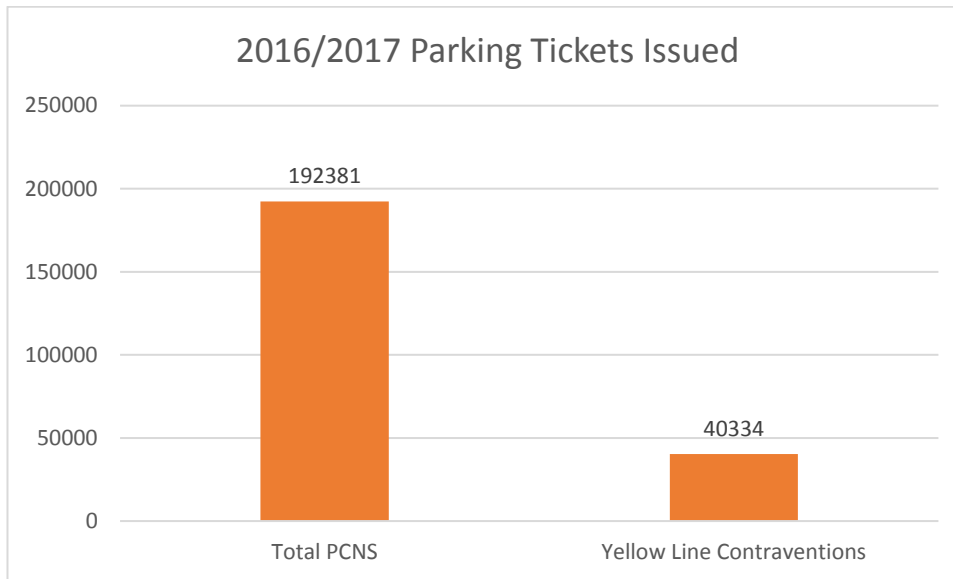
Fig 1

Type of Yellow Line*	Length (m)
Double	184,105
Single	129,001
Total	313,106

*Where there are no kerb markings or time plates indicating a loading prohibition

- 3.7 Figure 2 details the number of PCNs issued for contravention code 01, 'Parked in a Restricted Street during Prescribed Hours' in 2016/17. Contravention code 01 is associated with PCNs issued to vehicles which have contravened all yellow line restrictions, where there are no kerb markings or time plates indicating a loading prohibition.

Fig 2



Yellow Lines with a Loading Prohibition

- 3.8 Both single and double yellow line restrictions may have additional loading prohibitions which are indicated by an associated marking on the kerb and a time plate.
- 3.9 A single kerb marking indicates no loading/waiting during the hours of prohibition. These are generally found on main traffic routes or near to schools, prohibiting drivers from waiting at the roadside during hours of peak traffic flow.
- 3.10 Double kerb markings indicate that loading/waiting is prohibited at all times.
- 3.11 PAs will issue an instant PCN, meaning no observation period is required, to any vehicle incorrectly parked at a yellow line during a loading prohibition. However, drivers are permitted to wait, for no longer than two minutes, to allow a passenger to board or alight from the vehicle. Please note that it takes up to two minutes to physically issue a PCN.
- 3.12 There are various exemptions to loading/waiting prohibitions including vehicles being used by the emergency services, vehicles associated with road excavation and public utility works, security vehicles and postal service vehicles.

3.13 Figure 3 details the length of waiting/loading prohibitions in Edinburgh.

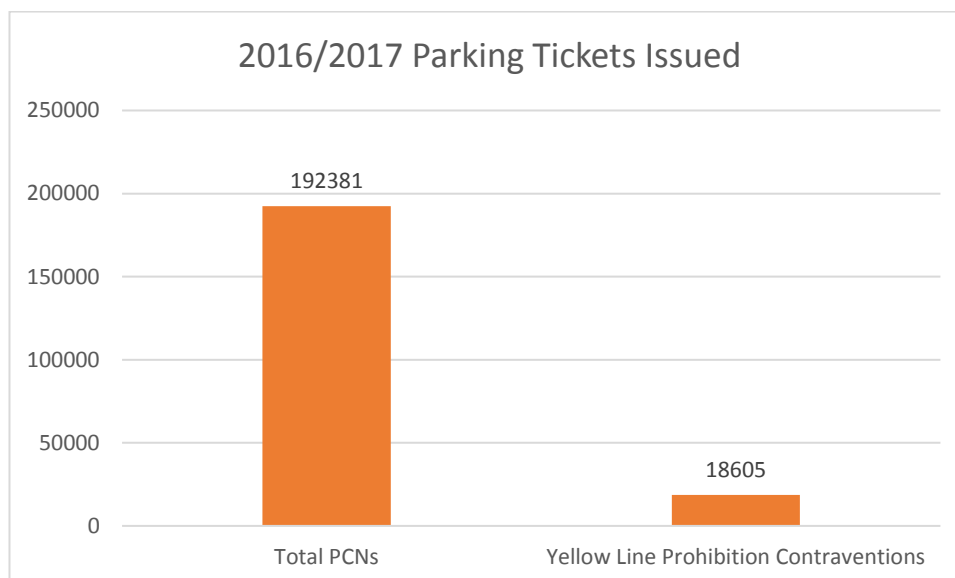
Fig 3

Type of Yellow Line (Kerb marking)	Length (m)
Double (One)	12,092
Double (Two)	111,383
DYL Loading Prohibition Total	123,475
Single (One)	68,551
SYL Loading Prohibition Total	68,551
Loading Prohibition Total	192,026

3.14 Figure 4 details the number of PCNs issued for contravention code 02, 'Parked or loading/unloading in a restricted street where waiting and loading/unloading restrictions are in force', in 2016/17. Contravention code 02 is associated with PCNs issued to vehicles which have contravened yellow line loading prohibitions.

3.15 Although no observation period is required, it can be difficult to issue a PCN for a 02 contravention as vehicles are often stopped for short periods with the driver nearby, meaning the vehicles are then driven away before the PCN is issued.

Fig 4



Red Line Restrictions

3.16 Single red lines indicate that no stopping or loading is permitted during the restricted hours, 7.30am until 6.30pm Monday to Friday and 8.30am until 5.30pm on Saturday, displayed on the associated Greenway entry time plate.

3.17 Double red lines indicate that no stopping or loading is permitted at any time as indicated by the associated time plate.

3.18 PAs will issue an instant PCN to any vehicle incorrectly parked at a red line during the hours of restriction.

3.19 There are various exemptions to red line restrictions including vehicles being used by the emergency services, vehicles associated with road excavation and public utility works, security vehicles and postal service vehicles.

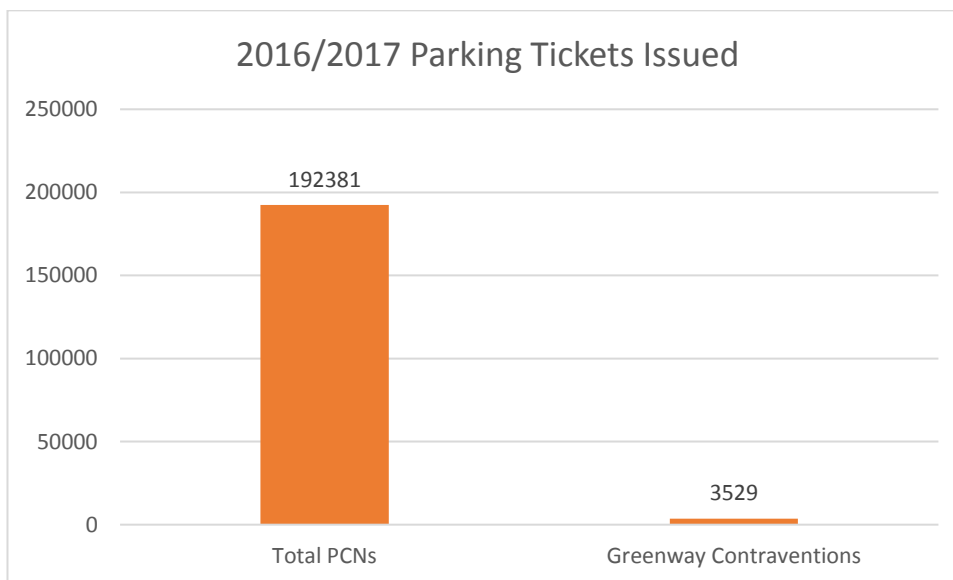
3.20 Figure 5 details the length of red line restrictions in Edinburgh.

Fig 5

Type	Length (m)
Double Red Lines	25,650
Single Red Lines	7,081
Greenways Total	32,731

3.21 Figure 6 details the number of PCNs issued for contravention code 46, 'Stopped where prohibited (on a Red Route or Clearway)' in 2016/17. Contravention code 46 is associated with PCNs issued to vehicles which have contravened Greenway prohibitions. As with the 02 contraventions, it can be difficult to issue a PCN as vehicles are often stopped for short periods with the driver nearby, meaning the vehicles are then driven away before the PCN is issued.

Fig 6



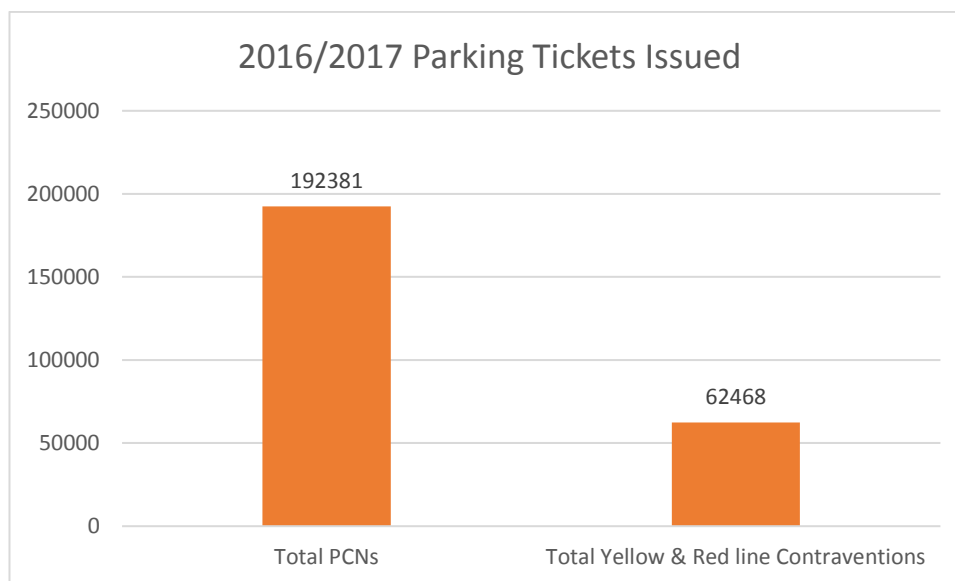
3.22 Figure 7 details that there are over 537 km of yellow and red line restriction in the city.

Fig 7

Restriction	Length (m)
Single Yellow Line (no loading prohibition)	129,001
Double Yellow Line (no loading prohibition)	184,105
Total Yellow Lines (no loading prohibition)	313,106
Single Yellow Line (one kerb marking – loading prohibition at specified time)	68,551
Double Yellow Lines (one kerb marking – loading prohibition at specified time)	12,092
Double Yellow Lines (two kerb markings – loading prohibition at all times)	111,383
Total Yellow Lines (with loading prohibition)	192,026
Greenways Double Red Lines	25,650
Greenways Single Red Lines	7,081
Total Red Lines	32,731
Total all Yellow and Red Line Restrictions	537,863

3.23 Figure 8 details the total number of PCNs issued in 2016/17 against these restrictions. 35% of all parking tickets were issued for contraventions related to yellow and red line restrictions, of those approximately 94% were issued on yellow line restrictions.

Fig 8

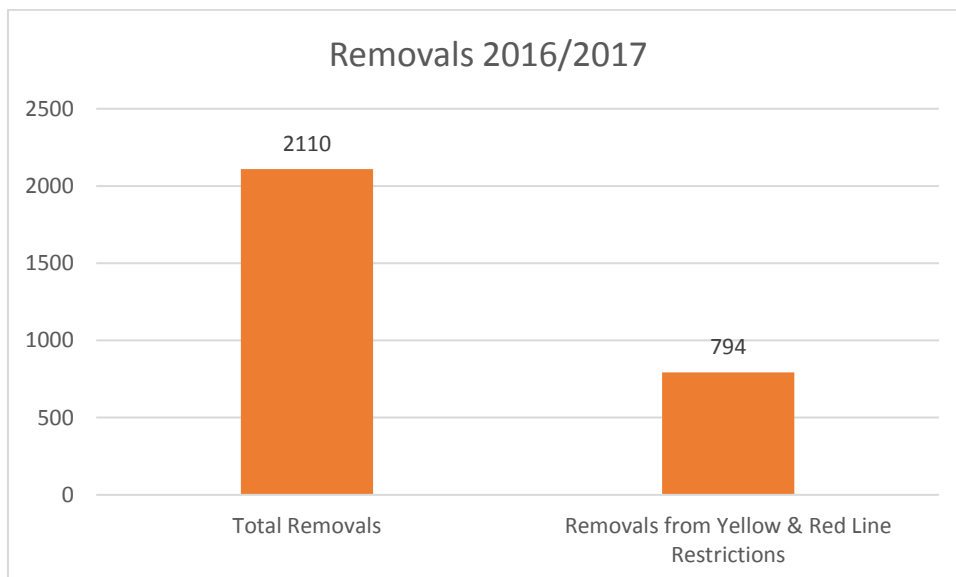


- 3.24 There are numerous different types of exemptions and restrictions associated with yellow and red lines in the city and PAs are fully trained on all aspects of enforcement of the restrictions.
- 3.25 Unfortunately, exemptions, dispensations and observation periods, allowing waiting on yellow and red lines, could lead to a perception that enforcement of the restrictions is not being carried out appropriately.
- 3.26 In order to improve understanding of yellow and red line restrictions PAs will continue advising customers on how best to achieve compliance. Parking Operations will also continue promoting the information available on the Council's website, including the parking protocol, keeping customers up to date on parking restrictions and how they are enforced.

Removals

- 3.27 Vehicles parked in contravention of the restrictions can be uplifted and removed to the car pound.
- 3.28 A list of priorities relating to the removal and relocation of vehicles can be found in Appendix 3. Please note that removals from single yellow lines, without loading prohibitions in place are considered to be a low priority as vehicles are often being loaded/unloaded, even if drivers are not seen during the observation period. While the O2 contravention is prioritised, given that most of the parking is short stay, vehicles are rarely lifted and instead are driven away before they can be removed.
- 3.29 Figure 9 details the number of vehicle removals in 2016/17. Over 37% of all removals were related to contraventions of yellow and red line restrictions.

Fig 9



Enforcement Resources Available

- 3.30 NSL has two operational bases in Edinburgh, one at Lower Gilmore Place and one at Broughton Market. The two bases are geographically situated in the south and north of the city, allowing for swift, targeted deployment across the whole city.
- 3.31 NSL also has a car pound, located in the north of the city which can deploy up to six removal trucks on a daily basis. The car pound can store up to 37 vehicles which have been removed for parking in contravention of the restrictions.
- 3.32 The deployment and shift patterns for all PAs, including Mobile PAs and Rapid Response are detailed in Appendix 4.
- 3.33 Under the current contract, it is clear that PAs cannot be in attendance at all locations where parking restrictions are in place, during all the hours of operation; there are over 33,000 parking places in Edinburgh and over 530km of yellow and red line restrictions to patrol. These resources are particularly stretched at morning and evening peak periods when main traffic routes and schools need to be enforced.

Key Performance Indicators (KPIs)

- 3.34 On street enforcement is primarily delivered through regular visits to streets with parking restrictions by PAs. The streets to be visited and the frequency of visits are specified in a schedule to the parking contract (see Appendix 5).
- 3.35 Street visit requirements can vary from eight visits per day, Monday to Saturday, in high priority city centre streets to once a week in low priority streets outside the CPZ.
- 3.36 Monitoring contract performance against the schedule of street visits is one of the Key Performance Indicators (KPIs) in the Parking Contract. In 2016/17, the contractor visited 99.85% of all specified streets to the approximately frequency against a KPI target of 99.20%. The KPI target has now increased to 99.40%.
- 3.37 In addition to set street visits and normal beats, requests for enforcement are often made at locations where there is a perceived problem relating to compliance with the parking restrictions. Requests for additional visits are logged and passed to NSL which deploys resources accordingly and reports back on any action taken. In cases where there is an acute issue which requires immediate action, the dedicated Rapid Response team will be deployed. An example of an additional street visit request log for November 2017 is in Appendix 6.
- 3.38 Enforcement of the parking restrictions is monitored by the contract team within the Parking Operations and Traffic Regulation team. NSL provide daily analysis of all KPIs to the Contract team and has formal weekly meetings with the Contract team to discuss performance and improvements in enforcement. Monthly meetings between NSL and the Parking and Traffic Regulation Manager, ensure that the KPIs are closely monitored and developed on a regular basis.

3.39 The contract for Decriminalised Traffic and Parking Enforcement in Edinburgh is based on the British Parking Associations' (BPA) model contract. The contract is nationally recognised by contractors and Local Authorities as a model of good practice for improving the quality of parking enforcement. The framework has now been taken on by our Collaborative Partners, the Highland Council and East Lothian Council.

Improving Parking in Edinburgh

- 3.40 NSL has two lining and signing squads deployed to maintain all lines and signs associated with parking restrictions in the city. We estimate that over £500,000 will be utilised in 2017/18 for lines and signs maintenance. Lines and signs maintenance is a significant part of the service provided by NSL, as enforcement action should only take place if the restrictions are correct.
- 3.41 The steadily increasing provision for lines and signs maintenance in the contract budget reflects the importance of maintenance, when trying to encourage compliance with the parking restrictions.
- 3.42 Improving accessibility to limited kerb side space is important to successfully encouraging compliance with the parking restrictions. If it is easier to park correctly, fewer motorists will risk parking inconsiderately on yellow and red line restrictions.
- 3.43 Throughout the lifespan of the current enforcement contract, Parking and Traffic Regulation will, through the use of constantly adapting and challenging KPIs, work with our parking contractor to improve compliance with the parking restrictions.
- 3.44 The nature of complaints has changed. Where most complaints used to be made by phone or e-mail, more and more people are now using social media. We are currently working with NSL, to employ a Social Media Manager, and hope to have someone in place in the next three months. The Social Media Manager will work for NSL but will liaise closely with the Council's media team, proactively monitoring social media channels to improve our reactivity and allow us to monitor and address issues.
- 3.45 Improving accessibility to parking places in the city through increased promotion of the successful RingGo cashless parking system.
- 3.46 Reviewing shift patterns to ensure that there are an adequate numbers of PAs on-street at the busiest times of the day.
- 3.47 Increasing enforcement for events/Festivals.
- 3.48 Utilising the PA's handheld computers to allow Parking Attendants to report other on-street issues to other departments in the Council, eg skips without permits.
- 3.49 Specific measures to improve parking in Edinburgh are included in the PAP, also at Committee today. These measures, some of which have already been delivered, will build on existing policies and work streams and include:
- 3.46.1 Proposals to introduce Sunday afternoon restrictions, roll out shared use parking places across the city and introduce visitors' permits in all areas.

- 3.46.2 Continually striving to improve customer's knowledge of parking restrictions and enforcement action. Information will continue to be provided and promoted through the Council's website. Parking and Traffic Regulation will work with colleagues in Place Development to improve road safety awareness and deliver the policies within the Local Transport Strategy.
- 3.46.3 Improving awareness of the many different restrictions, types of enforcement action that can be taken and the varied exemptions and dispensations allowed on yellow and red line restrictions to help ensure understanding compliance.
- 3.46.4 A Parking Enforcement Protocol, detailing all parking restrictions within Edinburgh, and the action that can be taken to enforce the restrictions, has been developed and approved to facilitate public knowledge of DPE in Edinburgh.
- 3.46.5 Managing CPZs and Priority Parking Areas (PPAs) by introducing a CPZ/PPA Protocol.

Transport Bill

- 3.50 Under the current contract, it is clear that PAs cannot be in attendance at all locations where parking restrictions are in place, during all the hours of operation; there are over 33,000 parking places in Edinburgh and over 530km of yellow and red line restrictions to patrol.
- 3.51 PAs are deployed on a priority basis and can be used to respond to requests for additional enforcement when needed. PAs are necessarily deployed to areas where permit holders expect enforcement and to main traffic routes at peak hours.
- 3.52 There was proposed legislation in the form of the Responsible Parking Bill which would increase the enforcement powers available to local authorities. The Responsible Parking Bill is no longer being considered and the Scottish Government are taking on such provisions from the previous Members' Bills as part of the Miscellaneous Transport Bill.
- 3.53 It is expected that a national ban on footway and double parking, without the need for additional lines and signs, will be introduced as part of the Transport Bill. There may also be options for CCTV enforcement at schools, where notices for parking on school keep clear markings can be issued by post in a similar manner to Bus Lane Charge Notices. However, at this stage it is unclear exactly what will be included in the Bill.
- 3.54 We have again lobbied for differential charging and a higher charge band as part of the recent Improving Parking in Scotland consultation and it is hoped that differential charging will be covered by the Transport Bill. PCN charge levels are set by the Scottish Government. In Edinburgh a PCN is issued at a charge of £60.00, which is discounted to £30.00 for prompt payment, regardless of what contravention the parking ticket has been issued for.

- 3.55 Council Officers will seek to continue working with stakeholders, MSPs, elected members and transport Scotland on developing and lobbying for the introduction of the Transport Bill.
- 3.56 One possible method to provide blanket enforcement, without expensive, unproductive deployment of resources, would be through using CCTV evidence. This type of enforcement has proved extremely controversial and the UK Government has recently passed legislation prohibiting the use of CCTV for general parking enforcement.
- 3.57 However, the UK Government supports CCTV enforcement outside schools during restricted hours, as this encourages compliance with the parking restrictions and improves road safety for all road users. We are hopeful that CCTV enforcement will be included within the Transport Bill.
- 3.58 Council Officers will seek to work with elected members, and the Road Safety team to continue to lobby Scottish Government to allow CCTV enforcement on restrictions relating to schools.
- 3.59 CCTV enforcement means that PAs do not need to be on street for a PCN to be issued and do not need to spend time recording details before issuing a PCN. The PCN is issued by post in a similar manner to the way Bus Lane Charge Notices are currently issued.

4. Measures of Success

- 4.1 The enforcement contract will continue to be managed using a set of dynamic, quality based KPIs. Achievement of these increasingly challenging KPIs will result in quality performance payments being made to the contractor.
- 4.2 The KPIs are renewed and generally made more challenging on at least an annual basis, meaning that the contractor's performance will have to improve throughout the contract's lifespan.
- 4.3 It is anticipated that the income generated within Parking and Traffic Regulation's revenue budgets will be maintained or increase throughout the lifespan of the current enforcement contract. This indicates that compliance will continue to improve through on street payments, permit payments and quality enforcement of the restrictions.
- 4.4 Through quality enforcement and maintenance of the parking restrictions, the delivery of the PAP, the use of innovative technology and lobbying the Scottish Government for changes to legislation, Parking and Traffic Regulation will improve accessibility to the city for all road users and maintain the economic vitality of the city.

5. Financial impact

- 5.1 There will be no changes to the income/spend as a result of this report. The Transport Bill may have financial implications when it is introduced.

6. Risk, policy, compliance and governance impact

- 6.1 It is considered that there are no known risk, policy, compliance or governance impacts arising from this report.

7. Equalities impact

- 7.1 Consideration has been given to the Council's Public Sector Duty in respect of the Equalities Act 2010.
- 7.2 Enforcement of the parking restrictions and continued communication of how enforcement is carried out will improve accessibility for residents, businesses and visitors to the city, providing enhancements in terms of Individual, Family and Social Life, Age and Disability by helping people to park closer to their destinations or their homes.
- 7.3 Enforcement of the parking restrictions and continued communication of how enforcement is carried out will assist residents to participate in public life. Enforcement and communication improves access for all residents and visitors, helping to minimise the disadvantage for people with mobility difficulties or those with children. Enforcement of the parking restrictions and continued communication ensures that there is an equality of opportunity for all road users.
- 7.4 Protection measures for vulnerable groups have been included, ensuring that all personnel involved in the delivery of the contract have basic disclosure certification and suppliers will have appropriate procedures in place for dealing effectively with children and vulnerable adults.

8. Sustainability impact

- 8.1 The proposals in this report are not expected to impact negatively on carbon emissions. The continued enforcement of parking restrictions will encourage people not to park incorrectly and to consider their parking options. It is considered that without proper enforcement carbon emissions would increase greatly and to a level above those produced from enforcement activities;
 - 8.1.1 The proposals in this report are not expected to impact negatively on the city's resilience to climate change impacts. Without effective parking controls and enforcement, incorrectly parked vehicles would slow down public transport and this could encourage more people to use their private vehicles; and
 - 8.1.2 It is possible that future improvements to the provision of parking enforcement could have beneficial impacts on carbon emissions.
- 8.2 The impacts of this report in relation to the duty on sustainability have been considered and the outcomes are summarised below.
 - 8.2.1 The proposals in this report are not expected to impact negatively on social justice. The enforcement of parking restrictions ensures that; disabled persons' parking places are used correctly, ensures clear access to public transport stops, improves road safety by removing dangerously parked vehicles from junctions and encourages walking and cycling in the city. Good access to transport helps reduce the negative effects of social exclusion.
 - 8.2.2 The proposals in this report are not expected to impact negatively on economic wellbeing. Parking enforcement ensures that there are good parking opportunities outside local businesses for their customers and for their deliveries. Parking permits are also available for local businesses to help them operate efficiently and enforcement keeps places free for their use and not occupied all day by vehicles which do not contribute to the local economy. Enforcement also ensures that trams can run effectively such as removing incorrectly parked vehicles. The Tram is a significant economic link between the airport, Edinburgh Park, Haymarket and the city centre.
 - 8.2.3 The proposals in this report are not expected to impact negatively on the city's environmental good stewardship.

9. Consultation and engagement

- 9.1 This report details the provision of Decriminalised Traffic and Parking Enforcement in Edinburgh and was written as a result of an intervention by Councillor David Key.
- 9.2 There was no need for any further consultation with any other stakeholder.

10. Background reading/external references

- 10.1 Item 7.5 Decriminalised Traffic and Parking Enforcement in Edinburgh heard by the transport and Environment Committee on 17 March 2015.

Paul Lawrence

Executive Director of Place

Ewan Kennedy, Service Manager – Transport Networks

E-mail: ewan.kennedy@edinburgh.gov.uk | Tel: 0131 469 3575

11. Appendices

Appendix 1 - Map of Special Parking Area

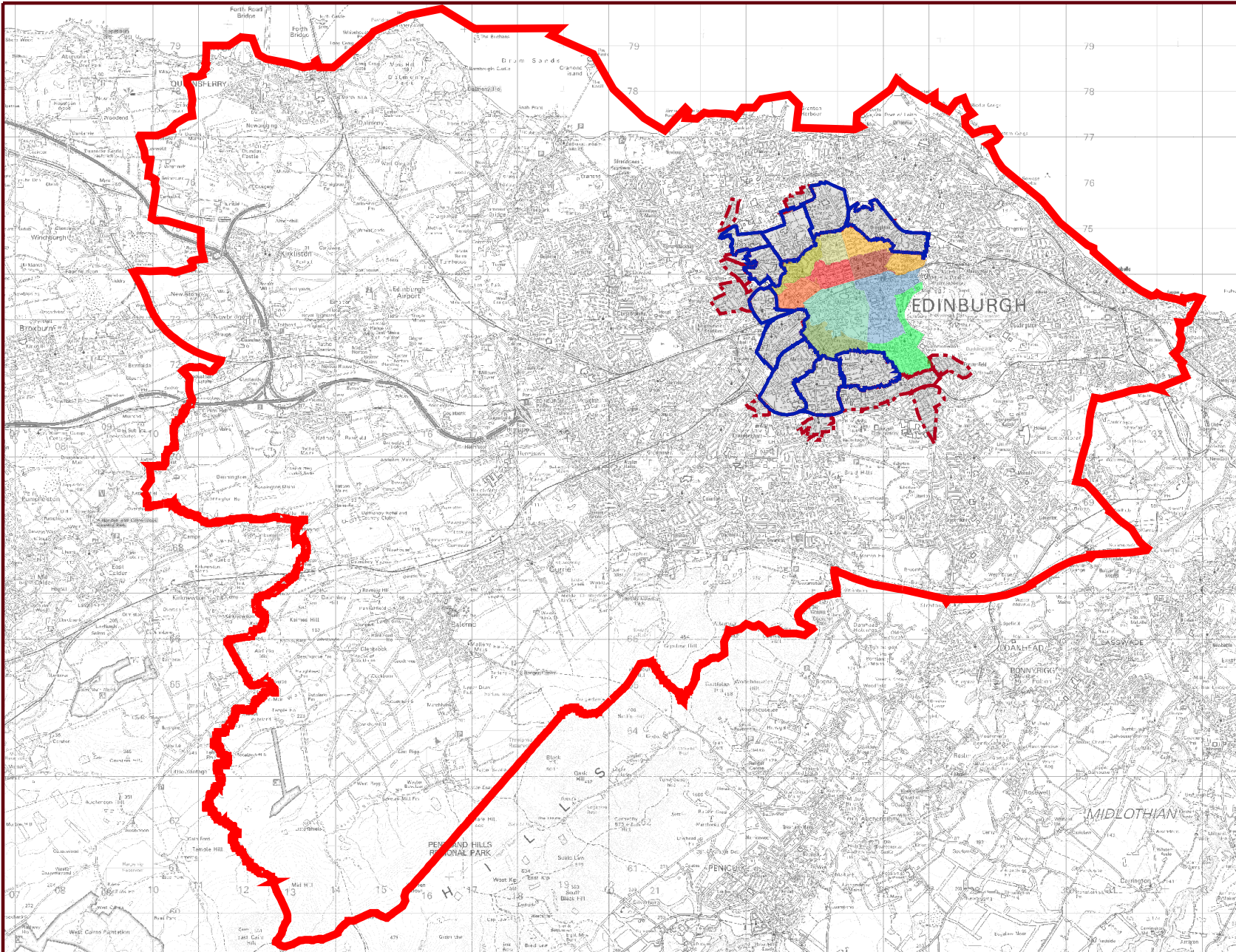
Appendix 2 - Map showing hours of restriction

Appendix 3 - Vehicle Removal Priorities

Appendix 4 - PA deployment and shift patterns

Appendix 5 - Street Visits

Appendix 6 - Additional Street Log



NOTES

Red line = City of Edinburgh Council boundary
Central Zones = CPZ Areas



Produced using
 Smallworld GIS

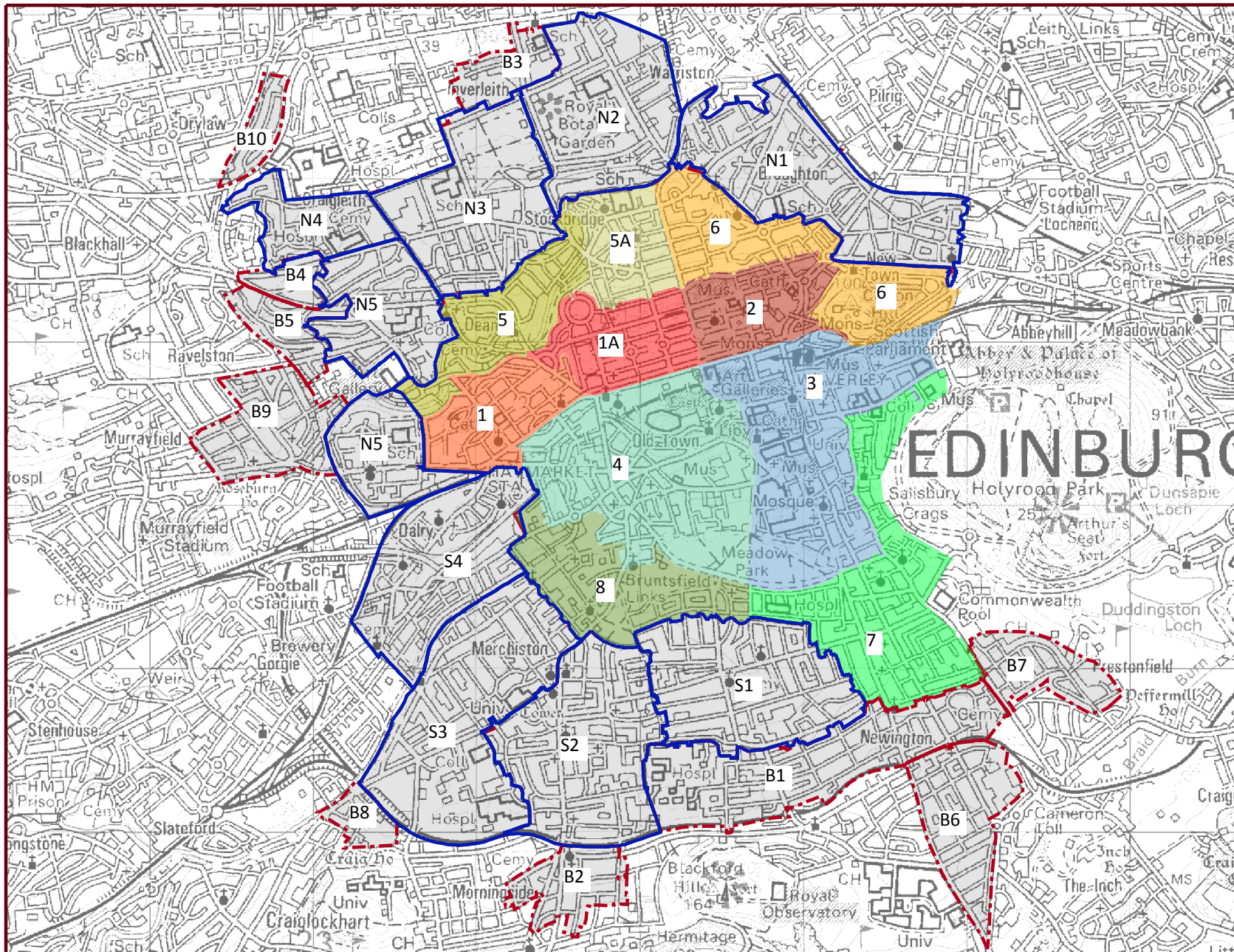
Appendix 1.
 Map of Special Parking Area

Scale: 1:122410



The material contained in this plot has been reproduced from an Ordnance Survey map with the permission of the Controller of HMSO, Crown Copyright.

DATE: 08/02/2018



NOTES

Central Controlled Zones:

1, 1A, 2, 3, 4

SYL hours of restriction
(Indicated by Zone Entry Time Plate):

Monday - Saturday
8.30am - 6.30pm

Peripheral and Extended
Controlled Zones:

5, 5A, 6, 7, 8, N1, N2, N3, N4,
N5, S1, S2, S3, S4

SYL hours of restriction
(Indicated by Zone Entry Time Plate):

Monday - Friday
8.30am - 5.30pm

Priority Parking Areas:

B1, B2, B3, B4, B5, B6, B7, B8,
B9, B10

SYL hours of restriction
(Indicated by Individual Time Plate)

--



Produced using Smallworld

CPZ Restrictions
Prevailing SYL Hours

Scale: 1:34180



The material contained in this plot has been reproduced from an Ordnance Survey map with the permission of the Controller of HMSO, Crown Copyright.

Date: 08/02/2018

VEHICLE REMOVALS PRIORITIES

Vehicles can be removed if they are parked in contravention of the regulations, irrespective of the actual contravention committed. The Council does, however, prioritise vehicles for removal in the following order:

Priority	Manner of Parking
HIGH	Where the vehicle presents a risk to safety and/or is obstructing traffic flow, such as Greenways and Bus Stop Clearways.
	Persistent Evaders
	Applies to all vehicles with 5 or more open tickets on the High Value Debtor list. For all persistent evaders with a monetary value of £500 or more awaiting payment, in such circumstances, there is no restriction on the number of times a vehicle can be impounded. This should continue until the monetary value is reduced to £150 or until otherwise advised by Parking Services.
	Foreign Vehicles
MEDIUM	Applies to all foreign vehicles with 5 or more open tickets on the High Value Debtor list
	Where the vehicle is parked in a disabled bay without displaying a valid blue badge
	Where the vehicle is parked in a permit parking bay without displaying a valid permit * (see note below)
	Where the vehicle is parked on a double yellow line when loading or unloading is prohibited ** (see note below)
	Where the vehicle is parked on a single yellow line when loading or unloading is prohibited ** (see note below)
	Where the vehicle is parked in a bay for which it is not designed or approved, e.g. motor cycle or Car Club bays
	Where a vehicle is parked on a length of street where loading and unloading is prohibited due to a Temporary Traffic Regulation Order (TTRO) and Suspended Bays
	Where a vehicle is parked on a double yellow line, outwith any loading prohibition (arrangements must be made to remove the offending vehicle on the same day the PCN is issued)
Where the vehicle is parked in a public parking bay upon issue of the 2 nd PCN for the same contravention.	
LOW	Where the vehicle is parked in a limited waiting bay, or on a waiting restriction (e.g. single yellow line or loading bay) where loading is permitted but the vehicle is not being loaded or unloaded, the vehicle should not be removed until 1 hour has elapsed since the issue of the PCN.

* Where a vehicle is parked in a permit bay, solo motorcycle bay or on a waiting restriction, but is also displaying a valid voucher, it should not be removed until 15 minutes after the voucher has expired (**unless the vehicle belongs to a persistent offender**).

Non City Car Club vehicles parked in Car Club Bays should be removed immediately regardless of the fact that it may be displaying a valid voucher.

** For vehicles issued with a Penalty Charge Notice (PCN) for an 02, arrangements to be made to remove the offending vehicle prior to the offence changing to a 01 offence.

Appendix 4 Enforcement Deployment Patterns

	Oct-17	Oct-17	Oct-14	Oct-14	Feb 14 - Sept 14	Feb 14 - Sept 14
Broughton Market North Base						
Early Shift	0800-1700	18	0800-1700	18	0800-1700	19
Middle Shift	0945-1845	12	0945-1845	12	0945-1845	13
Late Shift	1200-2300	5	1430-2330	5	1430-2330	5
Night Shift	1830-0630	0	1830-0630	0	1830-0630	0
Lower Gilmore Place (LGP) South Base						
Early Shift	0800-1700	15	1800-1700	15	1800-1700	18
Middle Shift	0945 - 1845	12	0945-1845	12	0945-1845	14
Mobile						
Mobile Early Shift	0700-1600	5	0800-1700	5	0800-1700	4
Mobile Middle Shift	0945-1845	5	0945-1845	5	0945-1845	4
Rapid Response						
Rapid Response Early Shift	0700-1600	1	0700-1600	1	0700-1600	0
Rapid response Middle Shift	0945-1845	1	1400-1845	1	1400-1845	0
Total Deployment Monday-Friday		74		74		77
Saturday						
Broughton Market North Base						
Early Shift	0800-1700	8	0800-1700	8	0800-1700	10
Middle Shift	0945-1845	8	0945-1845	8	0945-1845	7
Late Shift	1200-2300	5	1430-2330	5	1430-2330	5
Night Shift	1830-0630	0	1830-0630	0	1830-0630	0
Lower Gilmore Place (LGP) South Base						
Early Shift	0800-1700	6	0800-1700	6	0800-1700	7
Middle Shift	0945-1845	6	0945-1845	6	0945-1845	7
Mobile						
Mobile Early Shift	0700-1600	3	0700-1600	3	0700-1600	2
Mobile Middle Shift	0945-1845	3	0945-1845	3	0945-1845	2
Rapid Response						
Rapid Response Early Shift	0700-1600	1	0700-1600	1	0700-1600	0
Total Deployment Saturday		40		40		40
Sunday						
Middle Shift	0945-1845	6	0945-1845	6	0945-1845	5
Late Shift	1200-2300	5	1430-2330	5	1430-2330	5
Night Shift	1830-0600	0	1830-0630	0	1830-0630	0
Total Deployment Sunday		11		11		10

Visit Area Code	Street Type	Description	Visit Requirements				Weekly/Monthly Visits		
			Daily Mon-Fri	Daily Visits Saturday	Sunday	Weekly Weekday Visits	Weekly/Monthly Visits Weekend Visits	Monthly/Weekly Visits	Monthly/Weekly Visits Weekend Visits
1	Main Traffic Routes	High Priority	2 visits per day during peak hours (0730-0915 and 1530-1830)	2 visits per day during peak hours (0730-0915 and 1530-1830)					
2	Greenways	High Priority	2 visits per day between peak hours 0915 and 1530-1830 4 visits per day (0730-1830)	1 visit per day between peak hours 2 visits per day (0830-1830)					
3a	Central CACZ	High Priority	4 visits between 0830-1330 4 visits between 1330-1830 2 visits between 0830-1330 2 visits between 1330-1830	4 visits between 0830-1330 4 visits between 1330-1830 2 visits between 0830-1330 2 visits between 1330-1830		1 visit btwn 1830 - 2200			
3b	Central CACZ	Medium Priority	1 daily 1 daily	1 daily 1 daily				2 visits btwn 1830 - 2200 1 visit btwn 1830 - 2200	
3c	Central CACZ	Low Priority						1 visit btwn 1730 - 2100	
4	Peripheral CACZ	High/Low Priority						1 visit btwn 1730 - 2100	
5	Extended CPZ	High/Low Priority							
6a	Priority Parking B1		1 daily between 1000 - 1130						
6b	Priority Parking Area B2		1 daily between 1330 - 1500						
6c	Priority Parking Area B3		1 daily between 1000-1130						
6d	Priority Parking Area B4		1 daily visit between 1130-1300						
6e	Priority Parking Area B5		1 daily visit between 1100 - 1200						
6f	Priority Parking Area B6		1 daily visit between 0930- 1100						
6g	Priority Parking Area B7		1 daily visit between 1230-1400						
6h	Priority Parking Area B8		1 daily visit between 1330-1500						
6i	Priority Parking Area B9		1 daily visit between 1330-1500						
6j	Priority Parking Area B10		1 daily visit between 1330-1500						
7a	Outside CACZ	High Priority							
7b	Outside CACZ	Low Priority	1 visit				1 visit		2 visits btwn 1830 - 2200
8	Team Routes in CPZ	High Priority	2 visits per day during peak hours (0730-0915 and 1530-1830)	2 visits per day during peak hours (0730-0915 and 1530-1830)					
9a	School Restrictions	High Priority	2 weekly visits start or finish times 0815-0900 or 1445 -1530	1 visit per day between peak hours					
9b	School Restrictions	Medium Priority	1 weekly visit start or finish times 0830-0900 or 1515 -1545 (or 1145-1230 on Fridays)						
9c	School Restrictions	Low Priority							2 monthly start or finish times 0815-0900 or 1445-1530
10	Problem Streets	High Priority	As required (response team)	As required (response team)	As required (mobile team)				

Visit 1 Main Traffic Routes

Bank Street
Bellevue
Bread Street
Brighton Place
Bristo Place
Broughton Street
Bruntsfield Place
Buccleuch Street
Canonmills
Causewayside
Chapel Street
Charlotte Square
Clerk Street
Coburg Street
Comiston Road
Constitution Street
Craigmillar Park
Dalkeith Road
Dean Bridge
Dewar Place
Duke Street
Dundee Street
East Fountainbridge
Easter Road
Ferry Road
Forrest Road
Fountainbridge
Frederick Street
George IV Bridge
Gilmerton Road
Gilmore Place
Granville Terrace
Great Junction Street
Hanover Street
Hillhouse Road
Hope Park Crescent
Hope Street
Huntly Street
Inverleith Row
Lauriston Place
Liberton Gardens
London Road
Lothian Street
Mansfield Place
Mayfield Gardens
Mayfield Road
Mehville Place
Minto Street
Montrose Terrace
Morningside Road
Morrison Street
Mound
Newington Road
Nicolson Street
North Bank Street
North Bridge
North Charlotte Street
Pleasance
Polwarth Gardens
Ponton Street
Portobello High Street
Potterrow
Princes Street
Queen Street
Queensferry Road
Queensferry Street
Randolph Cliff
Ratcliffe Terrace
Rodney Street
Sample Street
South Bridge
South Charlotte Street
South Clerk Street
St Leonard's Street
St Patrick Street
Summerhall
Teviot Place
Thornycroft
Torphichen Street
Waterloo Place
West Port
West Tollcross
Willowbrae Road
York Place

Visit 2 Greenways

Lothian Road
Haymarket Terrace
Wester Coates
Roseburn
Glasgow Road
Corstophine Road
St Johns Road
Leith Walk
Slateford Road
Dalry Road
Gorgie Road
Calder Road

Visit 3

3a Central CACZ High Enforcement

Castle Street
George Street
Glenfinlas Street
Hill Street
North Castle Street
North St David Street
South St Andrew Street
St Andrew Square
Thistle Street
Young Street

3b Central CACZ Medium Enforcement

Cathedral Lane
Elder Street
Hill Street Lane North
Hill Street Lane South
Hope Street Lane
Little King Street
Meuse Lane
North St Andrew Lane
North St Andrew Street
Register Place
Rose Street North Lane
Rose Street South Lane
St Colme Street
St James Place
Thistle Street Lane North East
Thistle Street Lane North West
Thistle Street Lane South East
Thistle Street Lane South West
West Register Street
West Register Street Lane
Young Street Lane North
Young Street Lane South

3c Central CACZ Low Enforcement

Abbey Strand
Abbeyhill
Abbeyhill Crescent
Abercromby Place
Ainslie Place
Albany Street
Altyn Place
Alva Street
Atholl Crescent
Atholl Crescent Lane
Bakelhouse Close
Blackfriars Street
Blair Street
Boroughloch
Boyd's Entry
Brighton Street
Bristo Port
Brougham Place
Brougham Street
Broughton Street Lane
Brown's Close
Buccleuch Place
Buccleuch Terrace
Calton Hill
Calton Road
Cambridge Street
Candlemaker Row
Canning Street
Canning Street Lane
Canongate
Castle Terrace
Castlehill
Chalmers Street
Chambers Street
Charles Street
Charlotte Lane
Chessel's Court
Chester Street
Chuckles Pend
Coates Crescent
Coates Gardens
Cockburn Street
Cornwall Street
Cowan's Close
Cowgate
Cranston Street
Crichton Street
Darnaway Street
Davie Street
Dewar Place Lane
Douglas Crescent
Douglas Gardens
Drumrynan Street
Drummond Street
Drumshugh Gardens
Drumshugh Place
Dublin Street
Dublin Street Lane South
Dunbar Street
Dundas Street
East Adam Street
East Crosscauseway
Eglington Crescent
Forbes Street
Forrest Hill
Forth Street
Gardner's Crescent
George Square
George Square Lane
Gibb's Entry
Gifford Park
Gilmour Street
Gladstone Court
Gladstone's Court
Glen Street
Glencairn Crescent
Glenyle Terrace
Grassmarket
Great Stuart Street
Greenside Lane
Greenside Row
Grindley Street
Grosvenor Crescent
Grosvenor Gardens
Grosvenor Street
Grove Street
Gullan's Close
Gullan's Close
Guthrie Street
Haddon's Court
Haddon's Court
Hardwell Close
Heriot Bridge
Heriot Place
Heriot Row
High Riggs
High School Yards
Hill Street
Hill Place
Holyrood Road
Horse Wynd
Howden Street

3c Central CACZ Low Enforcement (continued)

Infirmity Street
Jeffrey Street
Johnston Terrace
Kell Street
King's Stables Lane
King's Stables Road
Lady Lawson Street
Lansdowne Crescent
Lauriston Gardens
Lauriston Park
Lauriston Street
Leven Terrace
Lochend Close
Lochrin Place
Lochrin Terrace
Longstone Terrace
Lonsdale Terrace
Lynedoch Place
Lynedoch Place Lane
Magdala Crescent
Magdala Mews
Manor Place
Market Street
Marshall Street
Marshall's Court
Marshall's Court
Marshall's Court
Meadow Lane
Melville Crescent
Melville Drive
Melville Street
Melville Street Lane
Merchant Street
Montague Street
Moray Place
Mound Place
New Johns Place
New Skinner's Close
New Street
Nicolson Square
Niddy Street
Niddy Street South
Old Fishmarket Close
Old Tolbooth Wynd
Palmerston Place
Palmerston Place Lane
Pannure Place
Parliament Square
Picardy Place
Port Hamilton
Port Hamilton (no 3)
Queen Street Gardens East
Queen Street Gardens West
Queensberry Street Lane
Ramsay Garden
Ramsay Lane
Randolph Crescent
Randolph Lane
Randolph Lane
Randolph Place
Rankeloor Street
Richmond Place
Rosebank Cottages
Rosebank Cottages
Rosebery Crescent
Rosebery Crescent Lane
Rothsay Mews
Rothsay Place
Rothsay Terrace
Roxburgh Place
Roxburgh Street
Rutland Square
Rutland Street
Simon Square
South College Street
Spittal Street
St Giles Street
St John Street
St Mary's Street
St Ninian's Row
St Patrick Square
Stafford Street
Sugarhouse Close
Sugarhouse Close
The Mall
Tron Square
Union Street
Upper Bow
Valleyfield Street
Victoria Street
Walker Street
Waverley Bridge
Wemyss Place
Wemyss Place Mews
West Adam Street
West Bow
West College Street
West Nicolson Street
West Richmond Street
William Street
William Street North East Lane
William Street North West Lane
William Street South East Lane
William Street South West Lane
York Lane

Visit 4 Peripheral CP2

Admiral Terrace
Airlie Place
Albany Lane
Albany Street Lane
Alfred Place
Ann Street
Ann's Court
Ann's Court.
Argyle Park Terrace
Argyle Place
Barclay Place
Barclay Terrace
Barony Place
Barony Street
Belford Mews
Belford Park
Belford Park
Belford Park
Belford Place
Belford Road
Belford Road
Belgrave Crescent
Belgrave Crescent Lane
Belgrave Place
Bell's Brae
Bellevue Crescent
Bernard Terrace
Blacket Avenue
Blacket Place
Blackwood Crescent
Blenheim Place
Bowmont Place
Brandfield Street
Brandon Terrace
Briery Bauks
Broughton Market
Broughton Place
Broughton Place East
Broughton Place Lane
Brown Street
Brunton Place
Bruntsfield Crescent
Bruntsfield Terrace
Buckingham Terrace
Canon Lane
Canon Street
Carlton Street
Carlton Terrace
Carlton Terrace
Carlton Terrace Brae
Carlton Terrace Lane
Carlton Terrace Mews
Circus Gardens
Circus Lane
Clarence Street
Clarendon Crescent
Cochran Terrace
Comely Bank
Comely Bank Road
Cornwallis Place
Cumberland Street

Cumberland Street North East Lane
Cumberland Street North West Lane
Cumberland Street North West Lane
Cumberland Street South East Lane
Cumberland Street South West Lane
Cumberland Street South West Lane
Damside
Danube Street
Dean Bank Lane
Dean Park Crescent
Dean Path
Dean Street
Dean Terrace
Deanhaugh Street
Doone Terrace
Drummond Place
Dryden Place
Dublin Meuse
Dublin Street Lane North
Dumbiedykes Road
Duncan Street
Dundonald Street
East London Street
East Mayfield
East Newington Place
East Parkside
East Preston Street
Elm Row
Eton Terrace
Eyre Crescent
Eyre Place
Eyre Terrace
Fettes Row
Findhorn Place
Fingal Place
Forbes Street
Gayfield Place Lane
Gayfield Square
Gayfield Street
Gayfield Street Lane
Gillespie Crescent
Gillespie Street
Gilmore Park
Gladstone Terrace
Glenogle Road
Gloucester Lane
Gloucester Place
Gloucester Square
Gloucester Street
Grange Court
Grange Loan
Great King Street
Halles Street
Hamilton Place
Hart Street
Haugh Street
Hawthornbank Lane
Henderson Place
Henderson Place Lane
Henderson Row
Hermits Croft

Holyrood Park Road
Hope Park Terrace
Howe Street
India Street
Jamaica Street
Jamaica Street North Lane
Jamaica Street South Lane
Jamaica Street West
Kerr Street
Leamington Road
Leamington Terrace
Learmonth Terrace
Lennox Street
Lennox Street Lane
Leopold Place
Leslie Place
Livingstone Place
Logan Street
London Street
Lord Russell Place
Lower Gilmore Place
Lutton Place
Mackenzie Place
Malta Terrace
Marchmont Crescent
Marchmont Street
Mayfield Terrace
Meadow Place
Melville Terrace
Middleby Street
Millerfield Place
Moncrieff Terrace
Munro Place
Nelson Street
New Arthur Place
New Broughton
North East Circus Place
North West Circus Place
Northumberland Place
Northumberland Place Lane
Northumberland Street
Northumberland Street North West Lane
Northumberland Street South East Lane
Northumberland Street South West Lane
Old Broughton
Oxford Street
Oxford Terrace
Parkside Terrace
Perth Street
Raeburn Place
Regent Road
Regent Terrace
Regent Terrace Mews
Richmond Terrace
Rillbank Crescent
Roseneath Place
Roseneath Street
Roseneath Terrace
Royal Circus
Royal Crescent

Royal Terrace
Royal Terrace Mews
Salisbury Place
Salisbury Road
Saunders Street
Saxe-coburg Place
Saxe-coburg Street
Sciennes
Sciennes Gardens
Sciennes Hill Place
Sciennes House Place
Sciennes Place
Sciennes Road
Scotland Street
Scotland Street Lane East
Sienna Gardens
South East Circus Place
South Gayfield Lane
South Gray Street
South Oxford Street
Spence Street
Spottiswoode Street
St Bernard's Crescent
St Bernard's Row
St Catherine's Place
St John's Hill
St Leonard's Bank
St Leonard's Lane
St Stephen Place
St Stephen Street
St Vincent Street
Summer Bank
Summerhall Place
Summerhall Square
Summerside Street
Sunbury Mews
Sunbury Place
Sylvan Place
Terrars Croft
Upper Dean Terrace
Upper Gilmore Place
Upper Gray Street
Upper Grove Place
Viewcraig Gardens
Viewcraig Street
Viewforth
Viewforth Gardens
Viewforth Square
Viewforth Terrace
Warrender Park Crescent
Warrender Park Road
Warrender Park Terrace
West Mayfield
West Mill Lane
West Newington Place
West Norton Place
West Preston Street
West Silvermills Lane
Westhall Gardens
Wright's Houses

Visit 5 Extended CPZ

Arboretum Place
Arden Street
Ardmillan Place
Balbirnie Place
Beaufort Road
Beaverbank Place
Beaverhall Road
Belford Avenue
Belford Gardens
Bellevue Gardens
Bellevue Grove
Bellevue Place
Bellevue Road
Bellevue Street
Bellevue Terrace
Blackford Road
Blantyre Terrace
Boat Green
Borthwick Place
Braid Avenue
Broughton Road
Brunswick Road
Brunswick Street
Brunswick Terrace
Brunton Terrace
Bruntsfield Gardens
Caledonian Place
Caledonian Road
Cathcart Place
Chalmers Crescent
Church Hill
Claremont Bank
Claremont Crescent
Claremont Grove
Cluny Avenue
Cluny Place
Cluny Terrace
Comely Bank Street
Craigleith Hill Gardens
Craigleith Hill Green
Craigleith Hill Grove
Craigleith Hill Loan
Craigleith Hill Park
Craigleith Hill Row
Cumin Place
Dalrymple Crescent

Dick Place
Downfield Place
Dunedin Street
East Claremont Street
Eden Lane
Edina Street
Elgin Street
Elgin Terrace
Ettrick Grove
Ettrick Loan
Ettrick Road
Ettrickdale Place
Falcon Gardens
Falcon Road
Forbes Road
Gillsland Road
Grange Crescent
Grange Road
Green Street
Greenhill Gardens
Greenhill Place
Greenhill Terrace
Hampton Place
Harden Place
Hartington Gardens
Hartington Place
Hatton Place
Heriothill Terrace
Hillside Crescent
Hillside Street
Hope Terrace
Hopetoun Crescent
Hopetoun Street
Howard Place
Howard Street
Huntingdon Place
Inverleith Avenue South
Inverleith Place
Inverleith Place Lane
Inverleith Terrace Lane
Kilgraston Road
Lauder Road
Lauderdale Street
Laurel Terrace
Learmonth View
Liddesdale Place

Logie Green Gardens
Logie Green Loan
Logie Green Road
Mansionhouse Road
Marchmont Road
Mardale Crescent
McDonald Place
McDonald Road
McNeill Street
Melgund Terrace
Merchiston Avenue
Merchiston Bank Avenue
Merchiston Bank Gardens
Merchiston Crescent
Merchiston Gardens
Merchiston Mews
Merchiston Park
Merchiston Place
Mertoun Place
Mid Gillsland Road
Millar Place
Monmouth Terrace
Montgomery Street
Montgomery Street Lane
Montpelier
Montpelier Park
Montpelier Terrace
Morningside Terrace
Murieston Crescent
Murieston Crescent Lane
Murieston Lane
Murieston Place
Murieston Terrace
Napier Loan
Napier Road
Orchard Bank
Orchard Brae Gardens
Orchard Brae Gardens West
Orchard Brae West
Orchard Grove
Orchard Place
Orchard Terrace
Orwell Place
Palmerston Road
Pitsligo Road

Polwarth Crescent
Polwarth Grove
Polwarth Park
Polwarth Place
Polwarth Terrace
Ravelston Dykes
Ravelston Place
Rochester Terrace
Seton Place
South Ettrick Road
South Gillsland Road
South Learmonth Avenue
Spottiswoode Road
Springvalley Terrace
Springwell Place
St Margaret's Road
Strathearn Place
Strathearn Road
Strathfillan Road
Summer Place
Tanfield
Tantallon Place
Temple Park Crescent
Thirlestane Road
Thistle Place (mews 706)
Warriston Avenue
Warriston Grove
Warriston Place
Warriston Road
Warriston Terrace
Wellington Street
West Annandale Street
West Bryson Road
West Catherine Place
West End Place
West Montgomery Place
West Park Place
West Stanhope Place
Wester Coates Avenue
Wester Coates Gardens
Wester Coates Road
Wester Coates Terrace
Windsor Street
Windsor Street Lane
Woodburn Terrace

Visit 6 Priority Parking Areas

6a PPA B1
Mortonhall Road
West Relugas Road
Cobden Road
South Oswald Street
Burgess Terrace
McLaren Road
Glenisla Gardens
Fountainhall Road
Mentone Terrace
Mayfield Gardens
St Albans Road
Relugas Road
Grange Terrace
Blackford Avenue
Ventnor Terrace
Queen's Crescent
Moston Terrace
South Lauder road
Relugas Gardens
Glenorchy Terrace
Trotter Haugh
Bright's Crescent
Findhorn Place

6b PPA B2
Braid Avenue
Braid Crescent
Braid Road
Cluny Drive
Cluny Gardens
Comiston Gardens
Comiston Place
Comiston Road
Comiston Terrace
Corrennie Drive
Corrennie Gardens
Dalhouse Terrace
Ethel Terrace
Hermitage Gardens
Morningside Drive

6c PPA B3
Arboretum Road
Kinnear Road

6d PPA B4
Craigeith Road
Orchard Crescent
Orchard Drive
Queensferry Road

6e PPA B5
Blinkbonny Avenue
Blinkbonny Gardens
Blinkbonny Grove
Blinkbonny Grove West
Blinkbonny Road
Craigeith Drive
Crarae Avenue
Orchard Road South
Orchard Toll
Queensferry Road
Ravelston Dykes

6f PPA B6
Blackbarony Road
Craigmillar Park
Crawfurd Road
East Savile Road
East Suffolk Road
Eslemount Road
Gilmour Road
Gordon Terrace
Granby Road
Hallhead Road
Lygon Road
Mayfield Road
Ross Road
Savile Terrace
Suffolk Road
West Savile Road

6g PPA B7
Dalkeith Road
Kilmaurs Road
Kilmaurs Terrace
Kirkhill Drive
Kirkhill Gardens
Kirkhill Road
Kirkhill Terrace
Marchhall Crescent
Marchhall Place
Marchhall Road
Priestfield Avenue
Priestfield Crescent
Priestfield Gardens
Priestfield Grove
Priestfield Road
Priestfield Road North

6h PPA B8
Craiglockhart Terrace
Meggetland Terrace
Colinton Road

6i PPA B9
Abinger Gardens
Coltbridge Avenue
Coltbridge Terrace
Coltbridge Vale
Corstorphine Road
Garscube Terrace
Henderland Road
Kingsburgh Road
Murrayfield Avenue
Murrayfield Drive
Murrayfield Gardens
Murrayfield Place
Murrayfield Road
Ormidale Terrace
Succoth Avenue
Succoth Gardens
Succoth Place
Upper Coltbridge Terrace

6j PPA B10
Telford Drive
Telford Road
Telford Gardens
Telford Place

Visit 7

7a Outside CPZ - High Enforcement

Ashley Terrace
City Park
Corbiehill Road
Corstorphine High Street
Crewe Road North
Crewe Road South
High Street South Queensferry
Kingston Avenue
Lasswade Grove
Lochend Road
Lochend Road South
Milton Road
Newhaven Road
North Junction Street
Old Dalkeith Road
Porterfield Road
Redheughs Avenue

7b Outside CPZ - Low Enforcement

Abbey Street
Academy Street
Albert Street
Allan Street
Balfour Street
Bankhead Avenue
Bankhead Drive
Bath Street
Belhaven Terrace
Bellfield Street
Bernard Street
Blackford Avenue
Braid Road
Bright's Crescent
Buchanan Street
Burgess Street
Carpet Lane
Casselbank Street
Chesser Avenue
Cluny Drive
Cluny Gardens
Coltbridge Avenue
Comiston Drive
Comiston Gardens
Comiston Place
Comiston Springs Avenue
Commercial Street
Couper Street
Craighall Crescent
Craighall Road
Craiglea Drive
Craigleith Rise
Craigour Drive

Craigour Green
Craigour Place
Dalgety Avenue
Dalgety Road
Dalgety Street
Dickson Street
Drum Brae North
Drum Brae South
Drum Street
Dudley Avenue
Duncan Place
East Hermitage Place
East Trinity Road
Edinburgh Road
Edinburgh Road.
Elbe Street
Figgate Street
Fishwives Causeway
Fountainhall Road
Gordon Street
Gorgie Park Close
Gorgie Park Road
Granton Road
Harrison Gardens
Hawthorn Bank
Henderson Street
Hutchison Crossway
Inglis Green Road
Iona Street
Jane Street
Junction Place
Kilmaurs Road
Kilmaurs Terrace

Kirk Loan
Kirk Street
Lanark Road
Lanark Road West
Liberton Brae
Liberton Drive
Longstone Road
Lower Granton Road
Lower London Road
Madeira Place
Madeira Street
Main Street Davidson Mains
Manse Street
Marchhall Crescent
Marchhall Place
Marchhall Road
Mentone Avenue
Mentone Gardens
Mentone Terrace
Milton Street
Murrayburn Gate
Myreside Road
North Fort Street
Northfield Broadway
Norton Park
Ogilvie Terrace
Orchardfield Avenue
Oswald Road
Pilrig Street
Portobello Road
Quality Street
Queen Charlotte Street
Regent Street

Visit 8 Tram Routes in CPZ

Haymarket Terrace
West Mautland Street
Shandwick Place
Princes Street
South St Andrew Street
North St Andrew Street
York Place

Visit 9 School Restrictions

9a High Enforcement

School
Bruntsfield Primary School
Dairy Primary School
James Gillespies Primary School
Leith Walk Primary School
Preston Street Primary School
Sciennes Primary School
South Morningside Primary School
St Peter's RC Primary School
Stockbridge Primary School
The Edinburgh Academy
St Mary's Music School
Stewart's Melville College
St George's
George Watson's
Steiner School
Flora Stevenson Primary School
Tolcross Primary School
George Heriot's School
Royal Mile Primary School
Fettes College
Broughton Primary School
St Mary's RC Primary (Edin)

Street
Montpelier
Cathcart Place
Whitehouse Loan
West Montgomery Place
East Preston Street
Sciennes Road
Craigha Drive
Falcon Road
Hamilton Place
Henderson Row
Revelston Terrace
Crarae Avenue
Upperlinn Road
Spylaw Road
Queensferry Terrace

9c Low Enforcement

School
Baferno Community High School
Craigmount High School
Drummond Community High School
Gracemount High School
St Thomas of Aquin's RC High School
The Royal High Secondary School
Trinity Academy
Tynecastle High School
Wester Hailes Education Centre
Holy Road RC High School
St Augustines
Forrester High School
Craigroyston Community High School
Portobello High School
Boroughmuir High School
Broughton High School
James Gillespie's High School

Street
Bridge Road
Craig Road
Bellevue Place
Captain's Road
Chalmers Street
East Barmton Avenue
Craighall Road
McLeod Street
Murrayburn Drive
Duddingston Road West
Broomhouse Road
Pennywell Road
Milton Road
Viewforth
East Fettes Avenue
Lauderdale Street
Lasswade Road
Craighall Avenue

9b Medium Enforcement

School
Abbeyhill Primary School
Balgreen Primary School
Blackhall Primary School
Bonaly Primary School
Braidsburn School
Broomhouse Primary School
Brunstane Primary School
Bun-sgoll Taobh na Palrce
Carrick Knowe Primary School
Castleview Primary School
Clermiston Primary School
Colinton Primary School
Costorphine Primary School
Craiglockhart Primary School
Craighour Park Primary
Craigroyston Primary School
Cramond Primary School
Curtis Primary School
Dalmeny Primary School
Davidson's Primary School
Dean Park Primary School
Duddingston Primary School
East Craigs Primary School
Forthview Primary School
Fox Covert Primary School
Gilmerton Primary School
Granton Primary School
Gylemuir Primary School
Hermitage Park Primary
Hillwood Primary School
Holy Cross RC Primary School
Juniper Green Primary School
Kaimes School
Kirkliston Primary School
Leith Primary School
Liberton Primary School
Longston Primary School
Lorne Primary School
Murrayburn Primary School
Nether Currie Primary School
Newcraighall Primary School
Osgings Primary School
Parson's Green Primary School
Pimlehall Primary School
Prestonfield Primary School
Queensferry Primary School
Roseburn Primary School
St Andrew's Fox Covert RC Primary School
St Catherine's RC Primary School
St Cuthbert's RC Primary School
St David's RC Primary School
St John Wannay RC Primary School
St John's RC Primary School
St Joseph's RC Primary School
St Margaret's RC Primary School
St Mark's RC Primary School
St Mary's RC Primary (Leith)
St Ninian's RC Primary School
Stenhouse Primary School
The Royal High Primary School
Towerbank Primary School
Victoria Primary School
Wardie Primary School
Merchiston Castle School
Mary Erskine's
Cargiffield School
Craiglenney Primary School
Trinity Primary School
Gracemount Primary School
Ratho Primary School
Ferryhill Primary School

Street
Restalrig Drive
Abbey Street
Annfield
Ashley Grove
Ashley Terrace
Baberton Mains Wynd
Balgreen Road
Beach Lane
Bonaly Road
Bonnington Road
Boswall Parkway
Broomhouse Crescent
Burgess Road
Cameron House Avenue
Carlisle Avenue
Carlisle Crescent
Clerwood Terrace
Colinton Road
Corblehill Road
Craigcreek Road
Craighall Road
Craighall Terrace
Craigleith Rise
Craigmillar Castle Avenue
Craigmount Brae
Crammond Crescent
Currlehill Road
Duddingston Road
Duncan Place
Fair a Far Shot
Firthill Crescent
Gamekeepers Road
Gilmerton Road
Glenvarloch Crescent
Gracemount Drive
Granton Road
Ivanhoe Crescent
Hamilton Terrace
Hermitage Park
Kirkliston Road
Lampcare Road
Lastwade Road
Links Gardens Lane
Lorne Street
Magdalene Drive
Manse Street
Marchbank Gardens
Meadowfield Drive
Moredun Dykes Road
Moredun Park Road
Moredun Park Street
Muirhouse Place West
Northfield Broadway
Osgings Road North
Paisley Drive
Parlgrave Place
Parlgrave Street
Pentland View Road
Prestonfield Road
Redford Place
Redhall Grove
Westalrig Road South
Roseburn Avenue
Roseburn Street
Saughton Mains Street
Saughton Road
Sighthill Gardens
Sighthill Loan
South Gyle Road
Station Road
Stevenson Drive
Thomson Crescent
Wardie Burn Street West
Wardleburn Street East
West Piton Bank
West Piton Crescent
West Piton Place
Wester Broom Place
Whitehill Street
Loganlea Drive
Newhaven Road
Gracemount House Drive
School Wynd, Ratho
Groathill Road North

[Empty box]

[Empty box]

[Empty box]

Additional Street Requests - November 2017

NSL

<u>Date</u>	<u>Sent by.</u>	<u>Street</u>	<u>Action Requested</u>	<u>Action Taken</u>	<u>Priority</u>
03-Nov	M Kerrouchi	Magdala Crescent	Complaint about a double parked van.	E828 attended and moved van on.	Low Priority
01-Nov	C Moore	Hawthornvale	Councillor complaint about obstructive/footway parking . Extra visits to be carried out.	E1446 checked street but vehicles are away from restrictions.	Medium Priority
01-Nov	A Young	Station Road (Ratho)	Call from Police about vehicles on SKC. PA to investigate when in area.	E1205 attended and issued PCNs to both vehicles.	Medium Priority
01-Nov	R Muir	Old Dalkeith Road	Complaint about vehicles blocking cycle lane.	E795 regulary checking street but vehicles parking up outwith restricted	Low Priority
02-Nov	I Knops	East Pilton Farm Crossway	Complaint about vehicles on DYL and on footway.	E1187 issued to 1 vehicle but the other had gone.	Low Priority
02-Nov	A Naylor	Bath Street	Complaint about a van regularly parking on DYL in the evening.	E806 moved on a vehicle from DYL.	Low Priority
02-Nov	G Graham	Lawson Crescent & Dundad Avenue	Complaints about obstructive parking from disabled badge holders.	E884 to check street and issue 24 offences under CEC instruction.	Medium Priority
02-Nov	R Muir	Manse Street	Request for street to be checked during school visit times.	E1107 allocated visit.	Medium Priority
03-Nov	C Moore	Clerwood Terrace	Complaint about vehicle on DYL. PA to attend if in area.	No PAs in area but extra visits to be carried out next week.	Low Priority

03-Nov	I Knops	Maritime Lane	Complaint about vehicles on footway and parked obstructively. PA to investigate.	E1446 checked street but vehicles are away from restrictions.	Low Priority
08-Nov	S Brown	Palmerston Place	Complaint about vans unloading on pavement	E1481 attended, vehicles gone.	Medium Priority
10-Nov	I Knops	Rosebery Crescent	Complaint about car in solo m/c bay	E1394 attended and PCN was issued (ED26196859)	Low Priority
07-Nov	J Yorkston	Belford Gardens	Report of 2 vans on footway. PA to attend.	E828 had checked the street but it was clear.	Low Priority
07-Nov	K Davies	Blacket Place	Complaint about trade permit holders in permit bays.	E835 checked street but there were no issues with the permits.	Low Priority
07-Nov	K Davies	Gorgie Road	Complaint about vehicles on SRL in the evening and weekends. PAs to increase visits.	E828 and E1429 made extra visits and issued several PCNs.	Low Priority
07-Nov	D Rodgers	Colinton Road	Complaint about lots of vehicles on SYL outside University between 3 and 4. PA to attend.	SYL not enforceable until 1630. E1429 issued 1 PCN.	Low Priority
08-Nov	I Knops	Bingham Avenue	Complaint about vehicles in disabled bay without a badge. PA to attend when available.	E806 checked it but there was nothing in contravention.	Low Priority

09-Nov	I Knops	Ocean Drive	Complaint about vehicles on DYL and footway. PA to attend if in area.	E948 checked location and moved on a van but DYL quite badly faded.	Medium Priority
09-Nov	G Graham	Clerwood Terrace	School to be added to problem street list.	Street added to list and extra visits to be scheduled.	Medium Priority
09-Nov	K Davies	Kilmaurs Road	Complaint about vehicles double parking in street during restricted hours. Visits to be made.	E1205 had checked area and any double parking was away from restrictions.	Low Priority
10-Nov	R Muir	Pentland Terrace	Complaint about commercial vehicles parking. PAs to make extra visits.	E1491 checked street but there wasn't anything in contravention.	Low Priority
10-Nov	S Brown	Bingham Avenue	Request for disabled bays to be checked in evening and weekends.	Visits scheduled for next week.	Low Priority
15-Nov	I Knops	West Bow	Vehicles regular parking on DYL	Additional visits requested.	Low Priority
16-Nov	C Moore	Grassmarket	Vehicle parked in pedestrian zone	E1392 visited, nothing in contravention	Low Priority
16-Nov	I Knops	Atholl Place	Vehicles parked on footway	Additional visits to be made	Medium Priority
13-Nov	K Davies	Oxgangs Road North	Complaint about lack of enforcement on DYL at 115. PAs to attend.	Multiple visits made by mobiles and Late shift but nothing found in contravention.	Low Priority
13-Nov	R Muir	East Fettes Avenue	Request for visits to be made on Wednesday nights to check DYL at New Field.	Passed on to Mobile PAs to make a visit. DYL heavily obscured by fallen leaves.	Low Priority

13-Nov	M Kerrouchi	Learmonth Gardens	Complaint about vehicles on DYL and parked in contravention.	E1205 visited but street is closed for roadworks.	Low Priority
13-Nov	J Yorkston	Belford Gardens	Complaint about work taking place outside number 10. PA to attend.	E828 moved on a van but can do nothing about the skip.	Low Priority
14-Nov	K Davies	Glebe Grove	Complaint about a vehicle on DYL.	E1107 issued a PCN.	Low Priority
14-Nov	N Mason	Blackhall Road	Complaint about vehicles on DYL.	PAs to check street while making school visit.	Medium Priority
14-Nov	K Davies	Ochiltree Gardens	Complaint about vehicles on footway and parked obstructively. PA to investigate.	E795 regular checking street but vehicles parking up outwith restrictions.	Low Priority
14-Nov	C Moore	Buckstone Terrace	Councillor request for extra visits to be made to limited waiting bays and school.	Passed on to PAs on beat 2, regular visits to be made over coming week. School visits made at appropriate times.	High Priority
14-Nov	M McFarland	Lauriston Place	Resident report of a vehicle overstaying in Greenway Freebay.	E1423 advised to ensure that she is ensuring all Gway bays	Low Priority
14-Nov	B Macdonald	Oxgangs Bank	Call regarding the parking OS school as it was particularly bad.	School gets checked as part of the regular checks,	Medium Priority
14-Nov	R Muir	Kingston Avenue	Request for RPZ to be checked during PM restriction. PA to be sent.	E1473 sent and issued a PCN.	Low Priority
15-Nov	C Moore	Queensferry Terrace	Complaint about parents parking at school start/end times.	E1205 and E526 checked street as part of regular visit on 17/11 and moved on several vehicles.	Medium Priority

15-Nov	C Moore	Frederick Street	Complaint about vans persisting in using the bus stop blocking the flow of traffic.	Passed on to BM to increase visits.	Low Priority
15-Nov	C Moore	Fountainbridge	Complaint about vehicles on footway.	Street in picture is Dundee Street but vehicle in on Zig-Zags which is the polices responsibilities.	Low Priority
15-Nov	C Moore	Gylemuir Primary School	Complaint about vehicles on DYL at school times.	E828 sent to deal make school visit.	Medium Priority
15-Nov	C Moore	Glebe Road	Report about Dominos delivery vehicles on DRL.	PAs asked to try and make visits.	Low Priority
15-Nov	C Taylor	Viewforth	Complaint about a van parking on DYL with no enforcement being seen. PA to check.	E1464 checked the street for the van but it was away.	Low Priority
16-Nov	R Muir	Buckstone Terrace	Request for extra visits to be made to Freebays.	Extra visits have been allocated to PAs on mobile beat 2.	Low Priority
16-Nov	I Knops	Oswald Terrace	Complaint about vehicles using DYL at school start/finish times.	E828 sent for extar school visit and reports that DYL were clear.	Medium Priority
17-Nov	D Rodgers	Ogilvie Terrace	Complaint about vehicles on YL. Area to be checked when possible.	Street recieves regular visits from mobile PAs.	Low Priority
17-Nov	Police	Newcraighall PS	Request from police for visit to be made as there have been complaints of traffic congestion and risk to children due to inconsiderate parking from parents at school start/finish times.	E948 sent and found that SKC remianed clear as vehicles were parking on footway away from the SKC/DYL.	High Priority
17-Nov	J Yorkston	Haddons Court/Gibbs Entry	Request for PAs to ensure they are fully enforcing the street including the paved area which is adopted therfore fully enforceable.	Passed on for PAs to increase visits.	Low Priority

17-Nov	M Kerrouchi	Morningside Road	Call to request PAs to check street in the morning as there have been reports of a delivery driver using the bus stop and blocking the cycle lane.	Times reported are before on-foot PAs can attend so mobiles will attend when able.	Low Priority
17-Nov	S Brown	Grosvenor Crescent	Complaint about lack of enforcement towards a van in RPZ. PA to investigate.	E1496 spoken to who advised that van was on SYL and had been seen loading. PA sent back to check street.	Low Priority
17-Nov	G Dougherty	Redgauntlet Terrace	Complaint about non-badge holders regularly parking in bays.	Passed on for E1473 to check in the following week.	Low Priority
20-Nov	R Muir	Newcraighall PS	Request for extra visits to be made.	E806 on his way when he had an accident so was unable to attend.	Medium Priority
20-Nov	R Muir	Lawnmarket	PAs to keep a look out for the Ghost Tour bus that has been parking on the DYL to sell tickets without a licence.	E1481 issued a PCN to the vehicle and PAs briefed to move on or PCN if found.	Low Priority
20-Nov	Police	Meadowfield Drive	Request to meet the police for a school visit.	E806 attended on 23/11 and spoke to Police/parents.	Medium Priority
20-Nov	I Knops	Queensferry Street	Complaint about a van on bus stop & footway	TL1102 checked street but it was clear.	Low Priority
24-Nov	G Dougherty	Brandfield Street	Complaint about vehicles on DYL, late afternoon / early evening	E526 attended, DYL all clear	Low Priority
20-Nov	J Currie	Oxgangs Bank	Call about vehicles parking on SYL at pick up/drop off times.	E1429 had just left street and moved on several vehicles while there	Medium Priority

21-Nov	H McFarlane	Gilmerton Road	Request for a PA to visit school as there were vehicles parked on DYL and SKC.	PAs on beat 3 allocated visits to school.	Medium Priority
21-Nov	I Knops	Cockburn Street	Twitter complaint about a lorry being footway parked.	Passed on to BM for PAs to deal with.	Low Priority
21-Nov	G Dougherty	North Bridge	Complaint about vehicles parking in the southbound lane at peak times causing congestion as buses are having to double park. Area to be checked and appropriate action taken.	TL1237 has instructed his PAs to check street when in area.	Medium Priority
21-Nov	A McMillan	Kings Road	Call about a vehicle parked partially in Disabled bay with no badge on display. PA to investigate.	E806 checked bay but there's no TP to enforce.	Low Priority
21-Nov	C Moore	Abbeyhill	Complaint about vehicles parking in bus lanes and obstructing traffic flow.	E806 and E948 instructed to increase visits to area when restrictions are active.	Medium Priority
21-Nov	A Naylor	Wardlaw Place	Call about a non-badge holder in disabled bay. PA to check out when in area.	E828 checked the street but there wasn't anything in contravention.	Low Priority
21-Nov	G Dougherty	Comely Green Place	Complaint about vehicles on DYL. Area to be checked and action taken when possible.	Passed on to PAs on beat 1.	Low Priority
22-Nov	C Moore	St Triduanas Rest	Complaint about a van parking up on DYL.	E806 checked in the morning but it was clear. Passed on to Late Shift to check.	Low Priority
22-Nov	H McFarlane	Dalry Road	Complaint about vehicles parking on DYL blocking access to Temp Rank and making buses block road.	E1472 moved on 2 vehicles and will monitor area.	Medium Priority
22-Nov	M Kerrouchi	Wardlaw Place	Call about a non-badge holder in disabled bay. PA to check out when in area.	E828 checked street again but the bay was still clear.	Low Priority
22-Nov	M McFarland	Stenhouse Drive	Resident complaint about a non-badge holder in DPPP.	E1429 sent to check it out.	Low Priority

23-Nov	G Graham	Iona Street	Complaint about vehicles blocking cycle lane as they are sticking out from recessed area.	E1205 and E761 checked street but as vehicles are beyond extent of DRL there's no action possible.	Low Priority
23-Nov	G Dougherty	Mount Vernon Road	Complaint about vehicles parking on DYL and blocking footway/line-of-sight. Visit to be made at pick up time.	E795 tasked with a visit.	Medium Priority
23-Nov	C Moore	Rosebery Crescent	Complaint about a car in the solo M/C bay.	E761 checked the street but the bay was clear.	Low Priority
23-Nov	C Moore	Newington Road	Complaint about vehicles parking up in bus lanes before end of restrictions. PAs to increase visits at the correct time.	E835 asked to attend on 24/11 but didn't make it in time. Area to be dealt WC 27th	Medium Priority
23-Nov	A Naylor	Colinton Road	Request for a PA to check OS 303 as there is a non-badge holder parked in disabled bay.	E1429 checked area but bay appears to be in private car park.	Low Priority
23-Nov	C Moore	Manse Road/Corstorphine Primary School	Complaint about vehicles on DYL and SKC at school drop-off and pick-up times.	E1491 moved several vehicles off restrictions on Corstorphine High Street.	Medium Priority
24-Nov	R Muir	Newcraighall PS	Request for a PA to attend to meet Police for school visit.	E948 allocated visit on 28/11.	High Priority
24-Nov	C Moore	Gorgie Road	Twitter complaint about vehicles parking daily on SRL between Stewart Terrace and Robertson Avenue.	E828, E1401 and E1429 make regular visits to street and move on vehicles but high level of driver use SRL instead of loading bays opposite.	Medium Priority
24-Nov	N Mason	Gorgie Road	Call about a van partially in Loading Bay and partly on Red Lines, PA to check it out.	E1401 checked the street but there wasn't anything out of bay	Low Priority

24-Nov	Parking Svcs	Grassmarket	Complaint about vehicles parking in contravention in pedestrian zone and blocking driveways. Accusations of PAs ignoring select vehicles.	E1294 checked the street and the pedestrian zone was clear and gets regularly cleared as previously reported. Checked out vehicle that was allegedly blocking the drive but all 4 wheels in bay and only rear body of vehicle out of bay so no	Low Priority
27-Nov	R Muir	Various schools	Request for PAs to make timed visits to specific schools to meet up with police.	PAs allocated schools as per list and details passed back to Client.	High Priority
27-Nov	R Muir	Edinburgh Road	Complaint about persistent footway parking by vehicle in SQF. Request for extra visits.	PAs made aware to keep an eye on area but visits limited by time restrictions. Late shift asked to try and make a visit.	Low Priority
27-Nov	K Davies	Fettes Avenue	Complaint about vehicles parking on DYL around Waitrose at the weekends. Request for visits to be made.	PAs on Saturday tasked with visits.	Low Priority
27-Nov	M McFarland	North Pilrig Heights	Request for extra visits due to vehicles parking on DYLs.	Passed on to mobiles to make visits when possible.	Low Priority
30-Nov	D Rodgers	Stockbridge Market	Request for a visit to be made between 10 & 5 on Sunday	PAs asked to try and make visits.	Low Priority

Total Requests	82
----------------	----

High Priority	4
Medium Priority	24
Low Priority	54